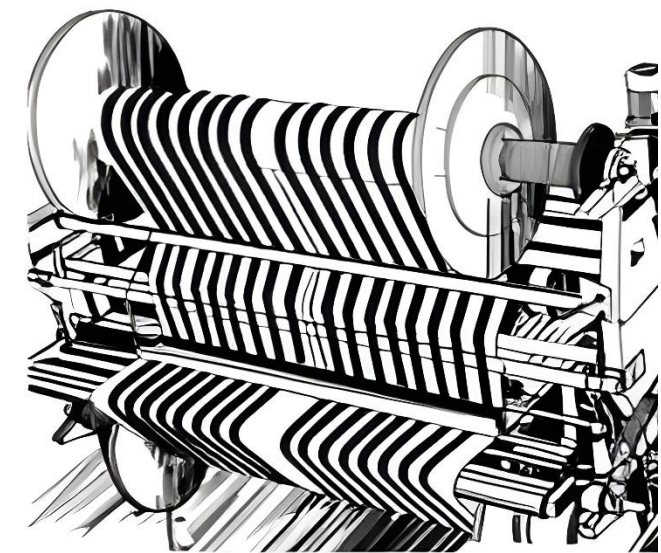
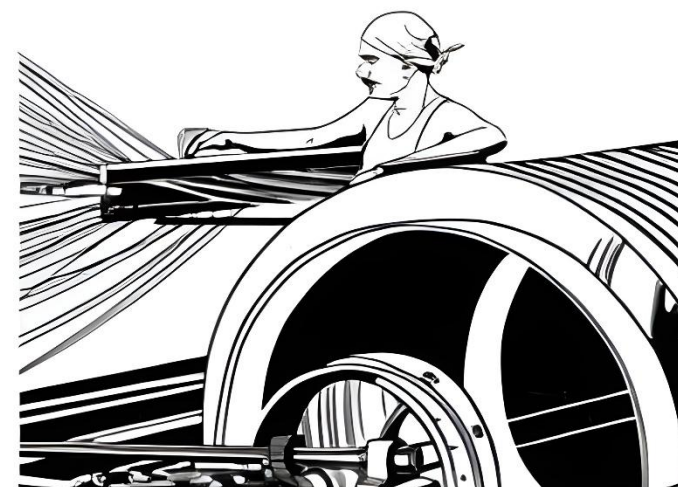


# Pushpa

## TEXTILE

— est. 1975 —





PARALLEL

A Division of Pushpa Textile





# Our Story



## **Pushpa Textile is a significant Market Leader in the Solapur Textile Industry**

Incorporated in 1975, the first brick of "Pushpa Textile" was laid by Shri Sureshchandra Ramkisan Rathi at Solapur (M.S.), India, under the chairmanship of Shri Ramkisan Rathi. The inception started with 12 power looms and high-quality craftsmanship of Jacquard Design Solapuri Chaddars and Turkish Towels

Now, we have grown to a brand for the apparel industry, Hotel and Hospital Linen Range, Corporate and School Uniforms, Jute Bags, Printed Bedsheets and so much more. All this made at our new factory with new age machinery to be the textile company you trust and love!



Great Fabrics for  
Greater  
Experiences



# Parallel



A Division of Pushpa Textile

Our clothing strikes a mix between a contemporary urban outlook, an ingrained sense of modern technique, discipline and attention to detail.

Creating a look that conveys your company's ideals and capabilities is a sign of a good personal brand. The best way to strengthen your brand in a world that relies on visual stimulation is through regular branding.

Because of the advantages to their brand presence, company uniforms are currently the in-demand workwear for the majority of firms.





# Notable Products

Garments & Apparels



We care for  
all  
who care for you!





The Makers  
of feathery fabrics

Our clothing strikes a mix between a contemporary urban outlook and an ingrained sense of modern technique, discipline, and attention to detail.

**CORPORATE WEAR**



# Hospital Wear

Delivering all your Hospital based fabric needs, from scrubs to bed linen. A list of trend setting designs to ensure comfort and efficiency





# Corporate Uniform

Building a brand is all about becoming well-known.



Corporate clothing for Institutions, ranging from office wear, school uniforms, and university business formals. Outfits for salons, spas, resorts, airlines, hotels etc

# Shirts & Trousers

An Important Part of Business Formals



A business formal dress code enhances the professional image of your workplace environment and your personal brand.



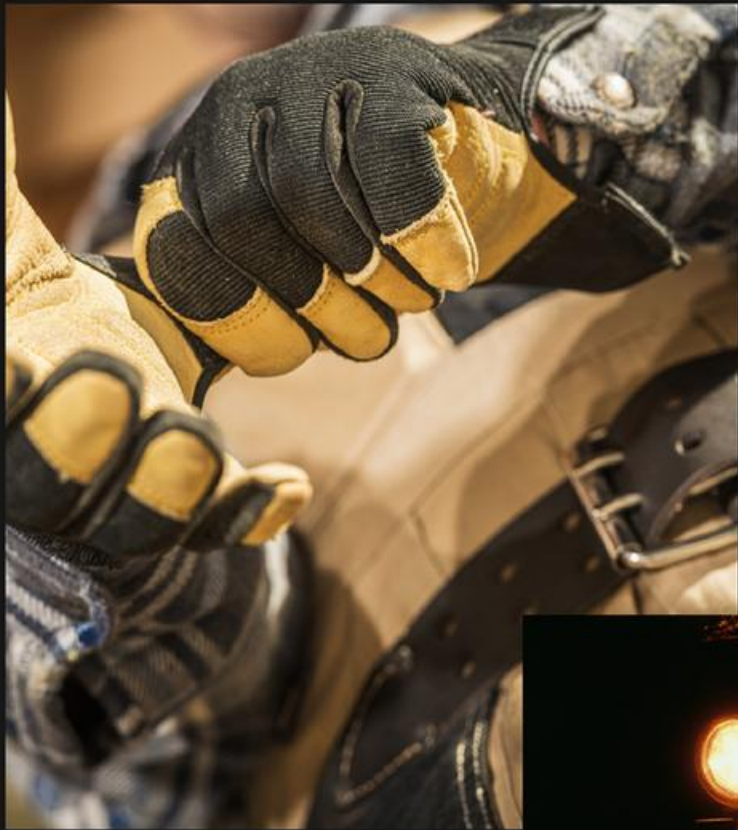
# Protective Wear

The protective wear depending on industry may take the form of aprons, coveralls, coats, pants, hats, hoods, sleeves, gloves, and totally encapsulating chemical protective suits.



# Industrial Wear

Different Industry,  
Same Quality



Workwear has a job to do, protect the body, be resistant to chemicals or heat, and so forth. It also needs to fit well and not constrict the wearer, this allows greater movement to benefit work.



# Safety Wear

Safety at work is one of the most significant and primary concerns in every industrial workplace scenario. With adequate safety equipment, the employees can guarantee complete protection for the workers, especially in this high-risk environment.

**Increases Quality of Work**

**Reduces stress**

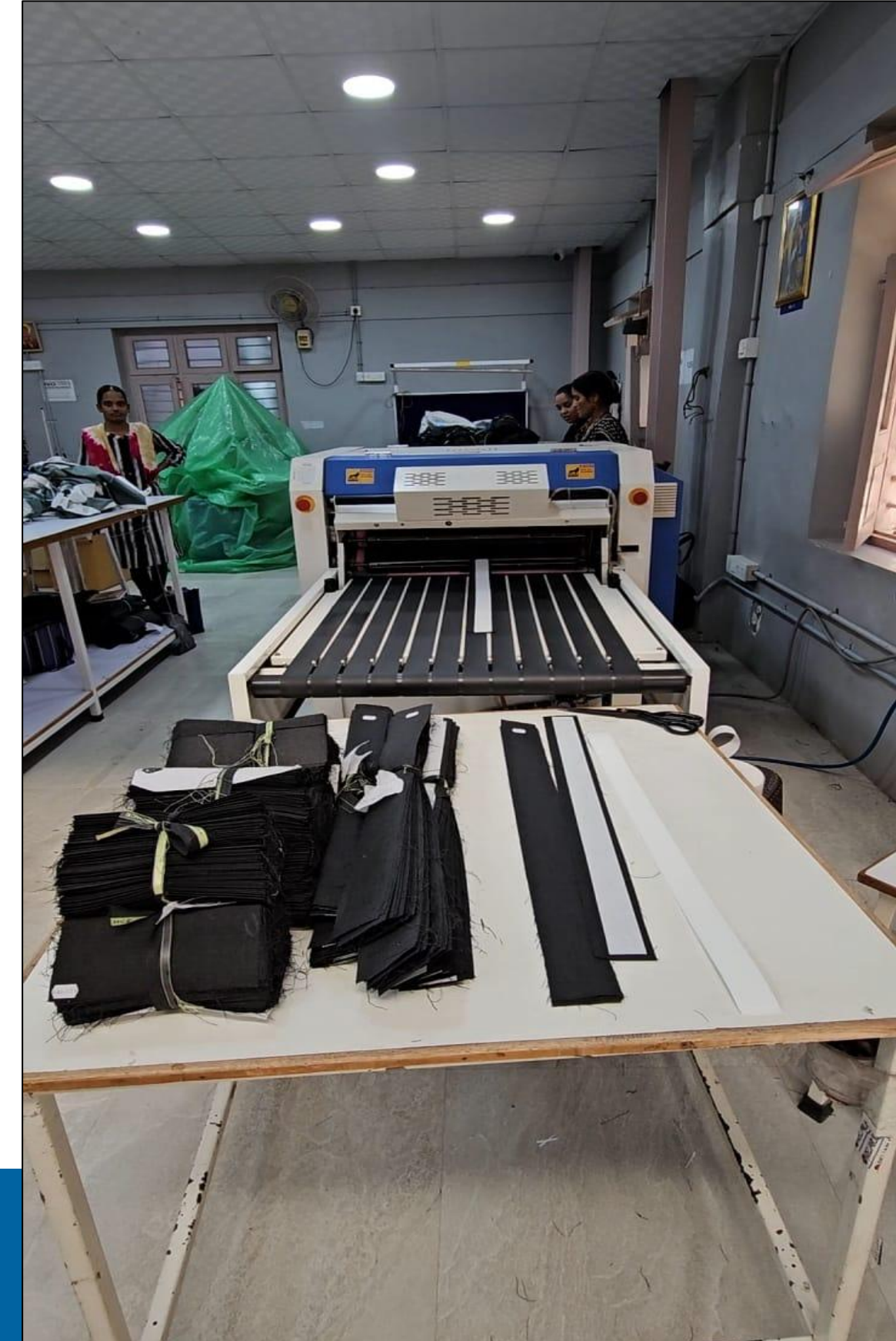


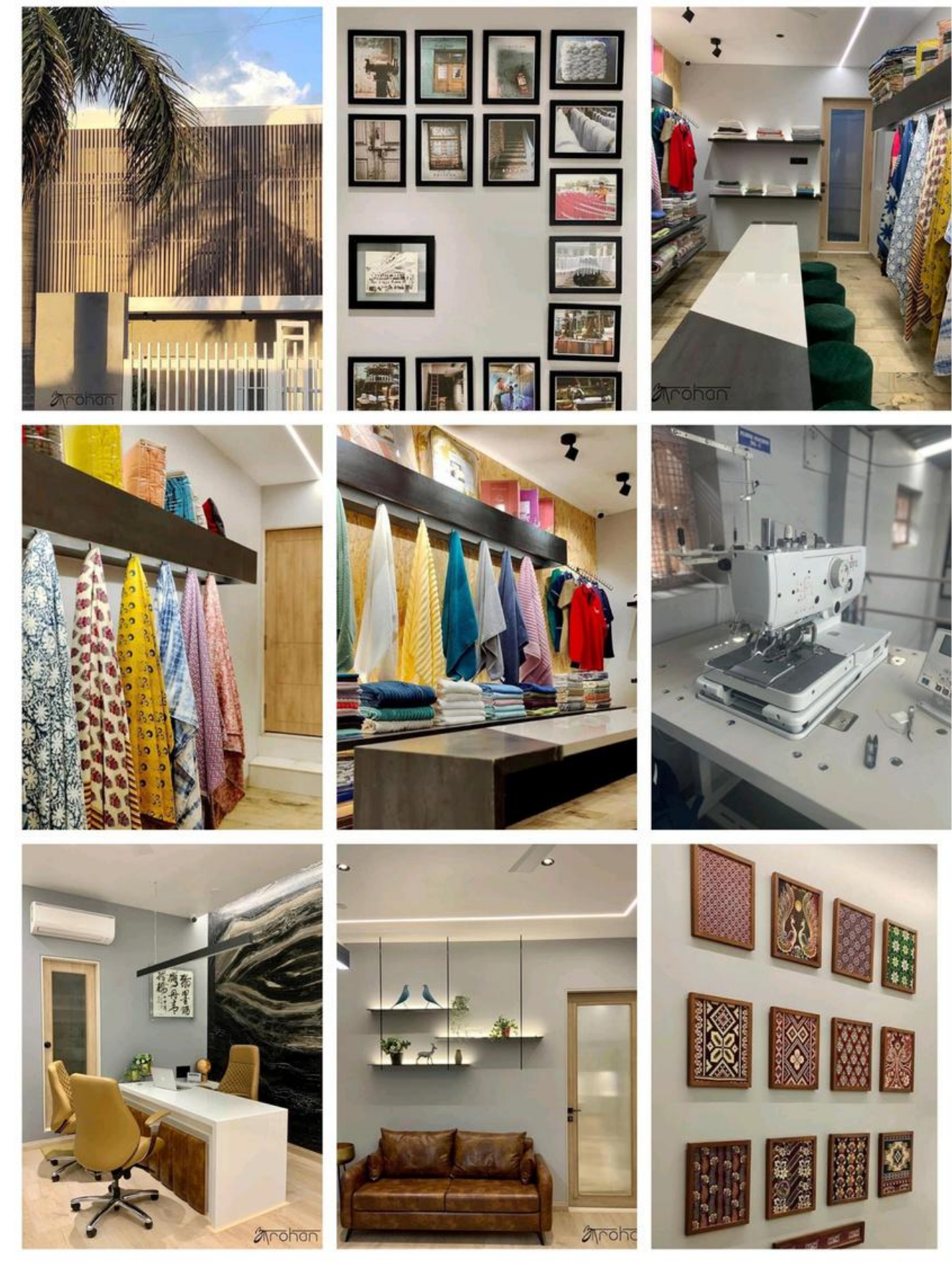


# The Machines

Our Process

# Our Machines





# The Factory

Inside Views

# Our Team

Meet the team that makes magic happen



SURESHCHANDRA RATHI

As the Founder of Pushpa Textile, his hard- work and dedication towards quality is unmatched. Always ahead of his times, his vision has transformed the traditional power handlooms factory and expanded them into the present modern stitching unit.



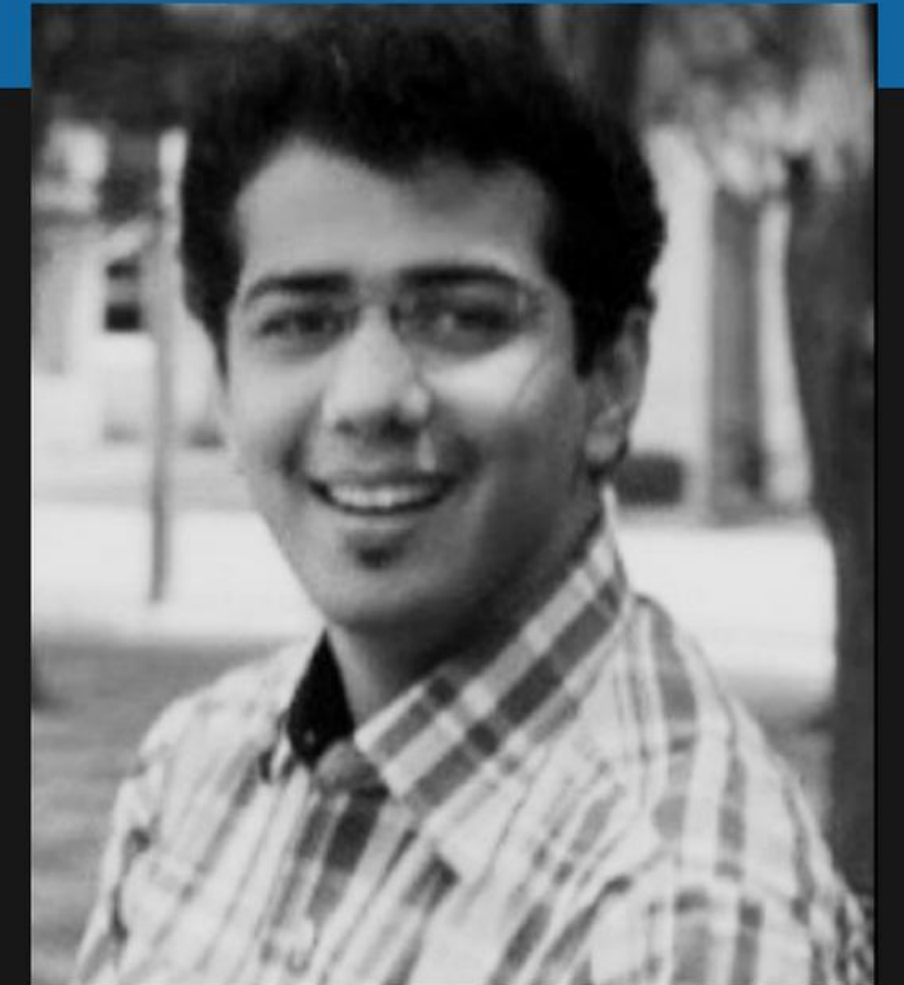
PRASHANT RATTHI

The man behind creating the Brand Pushpa Textile & now Parallel, has extended the Garment division of the firm. An MBA from Sydney & a Symbiosis Graduate, he aims to propel parallel as a market leader. Quality and Speed are his mantra.



SAPNA RATHI

With Innovative ideas & excellent skills she executes ground operations & creates sustainable processes in-house. An MBA graduate with experience of working with ISO processes of IT companies, makes her a great taskmaster.



PANKAJ RATHI

A graduate from VJTI Mumbai as Gold Medalist in Textile Engineering. After receiving a Masters in Textiles & Supply Chain from Cornell University, NY he is Currently based in Houston, Texas & manages our overseas operations.

# Get in Touch



155/4A/3. Old Akkalkot  
Naka, Solapur – 6 (M.S.) India



2903 Rutherford Place Ct,  
Katy TX (USA) – 77494



P A R A L L E L

## Phone

+91-8459847124 /  
+91-9923173456

## Email

info@pushpatextile.com

## Website

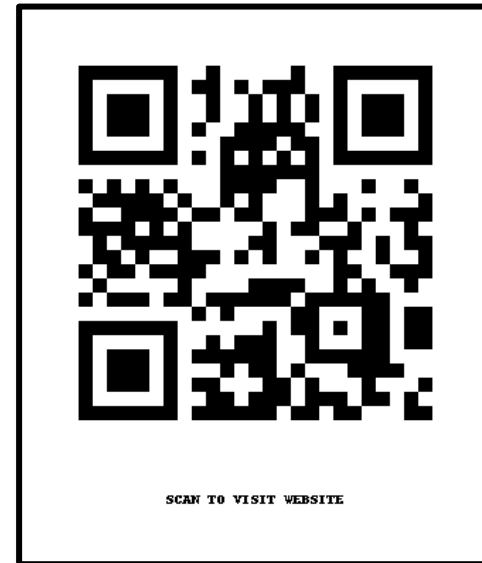
www.pushpatextile.com

# VISIT OUR WEBSITE



[www.pushpatextile.com](http://www.pushpatextile.com)

or Scan Me!



*For more details, please contact*

Mr. Prashant Ratthi

Ph. : (+91) 9923173456

Ph. : (+91) 8459847124

Email: [info@pushpatextile.com](mailto:info@pushpatextile.com)

Follow us:

[Instagram](#) | [LinkedIn](#) | [Facebook](#)

